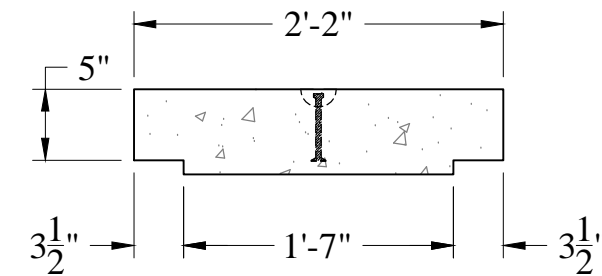
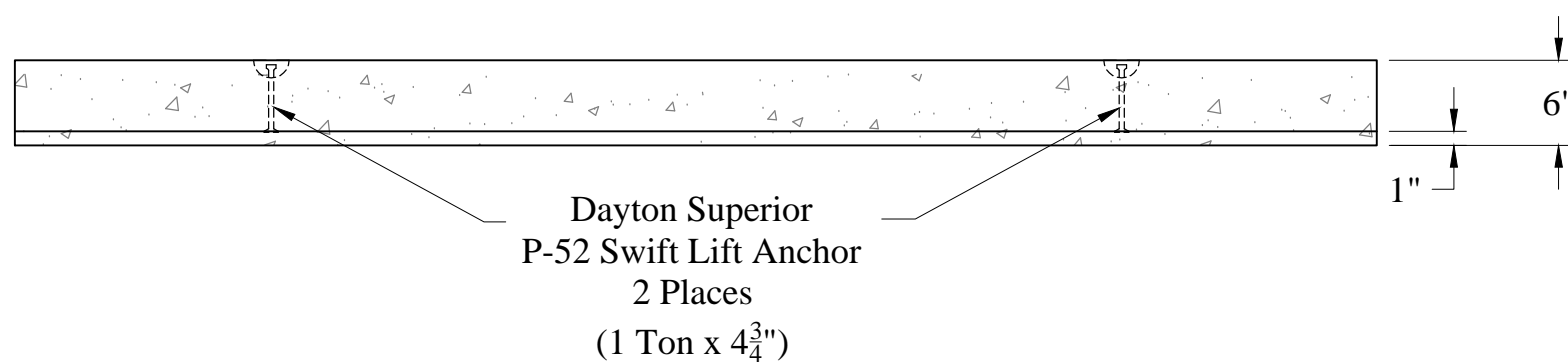
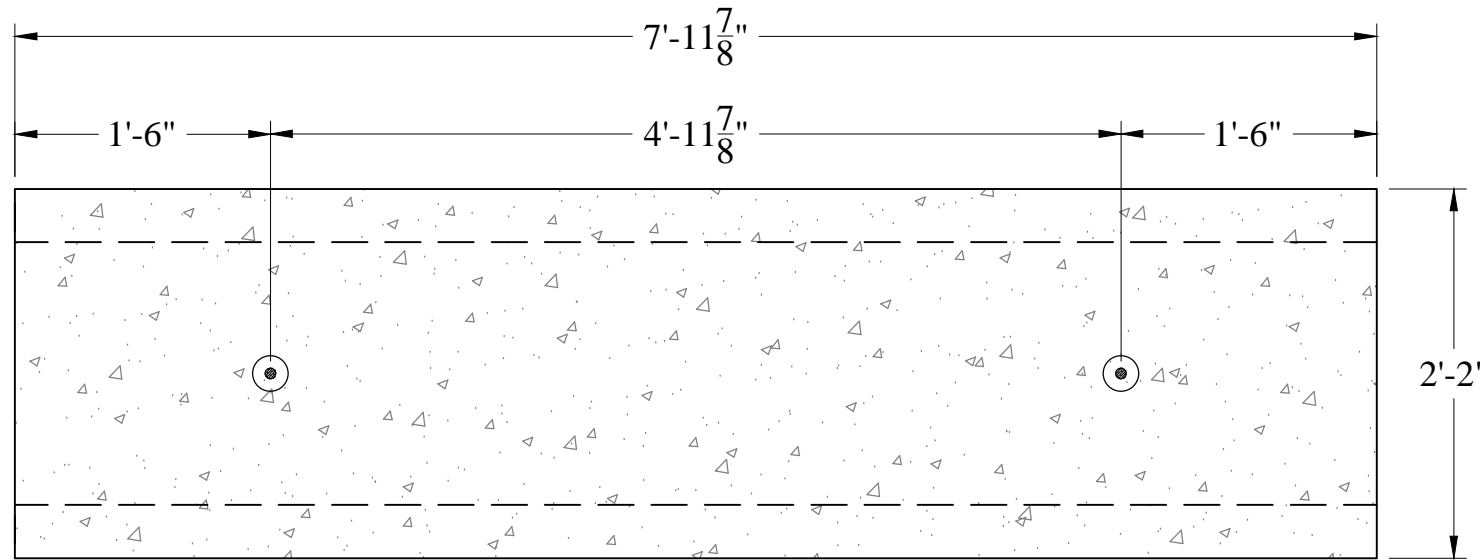


Phoenix Precast Products

Phoenix Precast Products

**General Notes**

1. Minimum 28 Day Compressive Strength:  $f'c = 5,000$  psi
2. Reinforcing Steel: ASTM A615 Grade 60 Black Deformed Bars
3. Concrete Cover On Reinforcing Steel:  $1\frac{1}{4}$ " Minimum, Unless Noted Otherwise
4. Precast Structure Shall Support Its Own Weight Plus The Following:
  - Live Load On Top Slab: H-20 Vehicular Loading
  - Dead Load Of Soil On Top Slab: None
  - Equivalent Lateral Fluid Pressure: 60 PCF
  - Uniform Live Load Surcharge of 125 psf Applied Horizontally To The Sides Of The Precast Structure
  - For Cable Trench and Cover, Factor Of Safety Of 1.2 Shall Be Used Against Flotation Based On Weights of Empty Structure and Ground Water Level 6" Below Finished Grade
5. Est. Weight: 1,250 Lbs



Date	03/01/11	Drawn By:	EWS
Rev:	0	App'd:	

**Phoenix  
Precast  
Products**

**Standard  
Cable Trench Cover**  
2'-2" x 7'-11<sup>7</sup>/<sub>8</sub>" x 5"